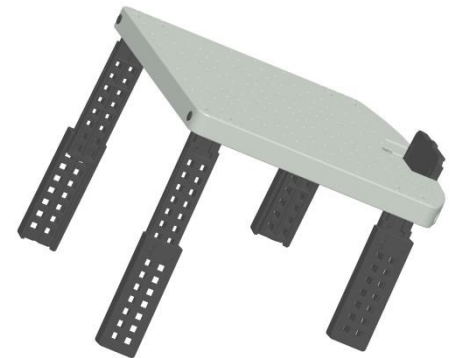
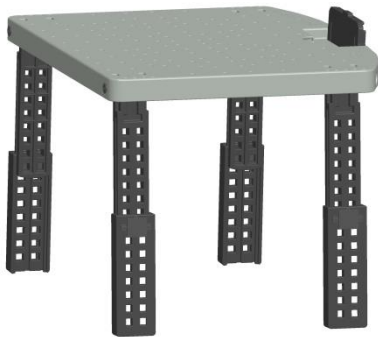
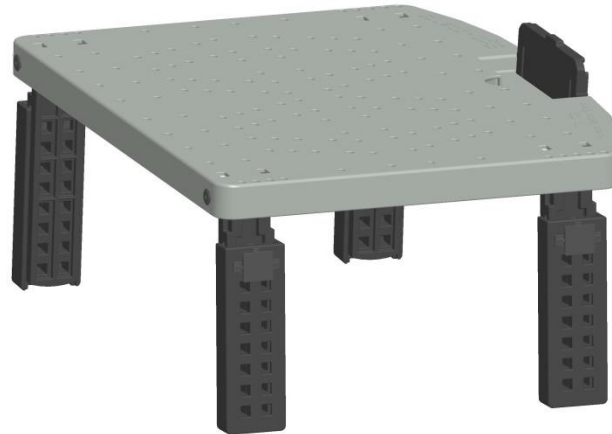
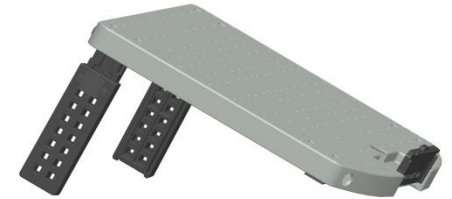
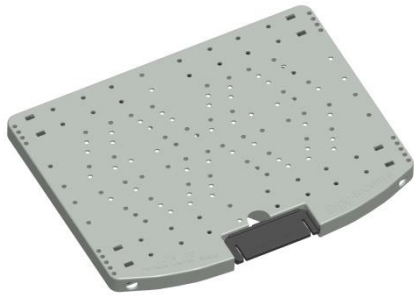




User Guide
for Portable Laptop Stand
Model: LTS 100



Portable Laptop Computer Stand, Model No. LTS 100

Product Description:

This product is a perfect **ergonomic accessory** to laptop computers, notebook computers, etc., which offers the user a means to place the laptop computer in the most comfortable position with **multiple, adjustable heights and viewing angles** to suit every individual's need and enables the user to work in an ergonomically correct posture for extended hours.

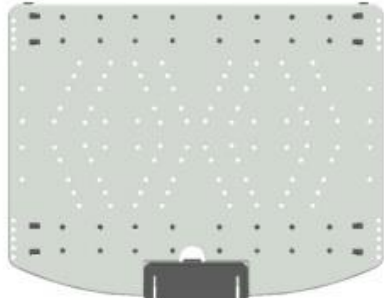
This product reduces the strain in the back and the neck of the user and increases the productivity by providing a comfortable and ergonomic posture, while using a laptop or notebook computer.

Product Features:

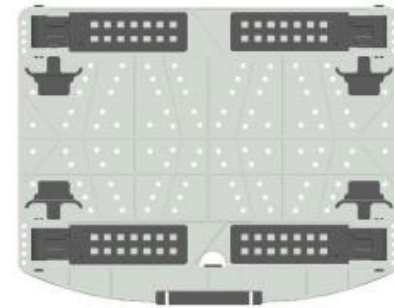
- ❖ **14 ½** inch wide X **11 ½** inch deep base can accommodate up to **21** inch laptops, notebook computers, tablets.
- ❖ Height can be adjusted in **½** inch increments from **6** inches to **9 ½** inches.
- ❖ Provides combinations of multiple viewing angles and heights to suit every individual.
- ❖ Folds flat and can be carried in a laptop carry bag.
- ❖ Strong and light weight (2 lbs.) design, made with high strength engineering plastics.

- ❖ This product comes fully assembled and ready to be used out of the box.
- ❖ Easily and quickly deployable to any given height and angle.
- ❖ User can re-arrange this product to any desired orientation quickly, any number of times, while working.
- ❖ Quickly collapses to flat position and becomes portable, after each use.
- ❖ Can withstand up to **25 lb.** weight.
- ❖ Vented base provides cooling and reduces heat build-up.
- ❖ Foldable stopper in the front prevents the laptop from sliding off, at any given angle.
- ❖ Can also be used as a book stand.
- ❖ Robust and Durable Construction.

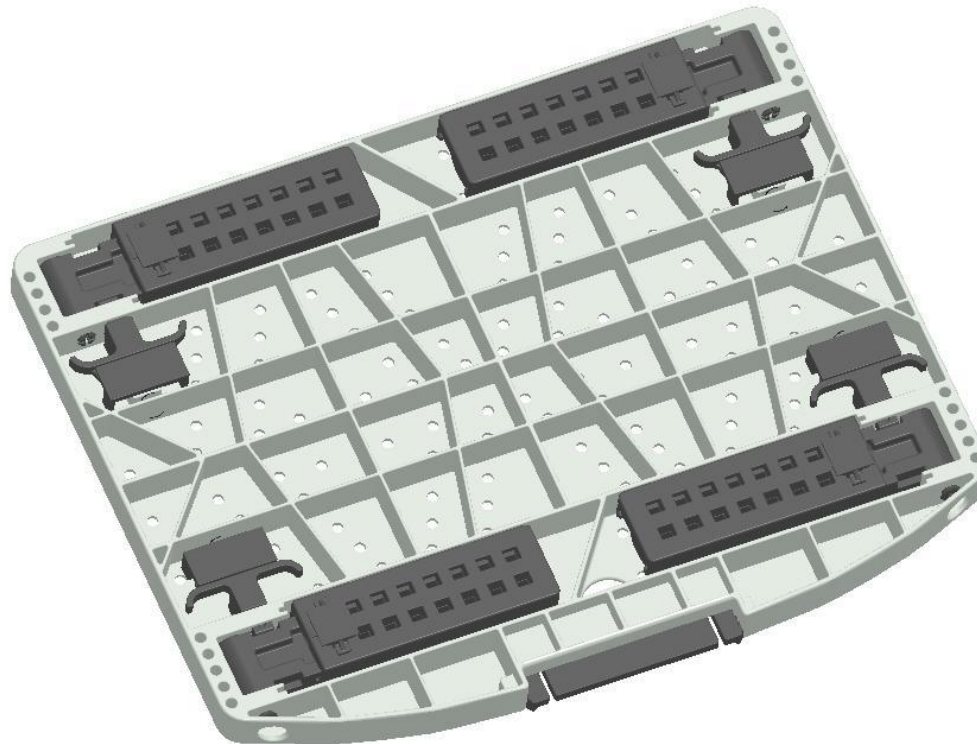
- ❖ **CAUTION: DO NOT SIT, STAND, STEP ON THIS PRODUCT. DO NOT PLACE HOT ITEMS ON IT.**
USE ONLY AS INTENDED.
NOT INTENDED FOR USE BY CHILDREN UNDER 8 YEARS OF AGE.
MAX LOAD CAPACITY = 20 pounds.

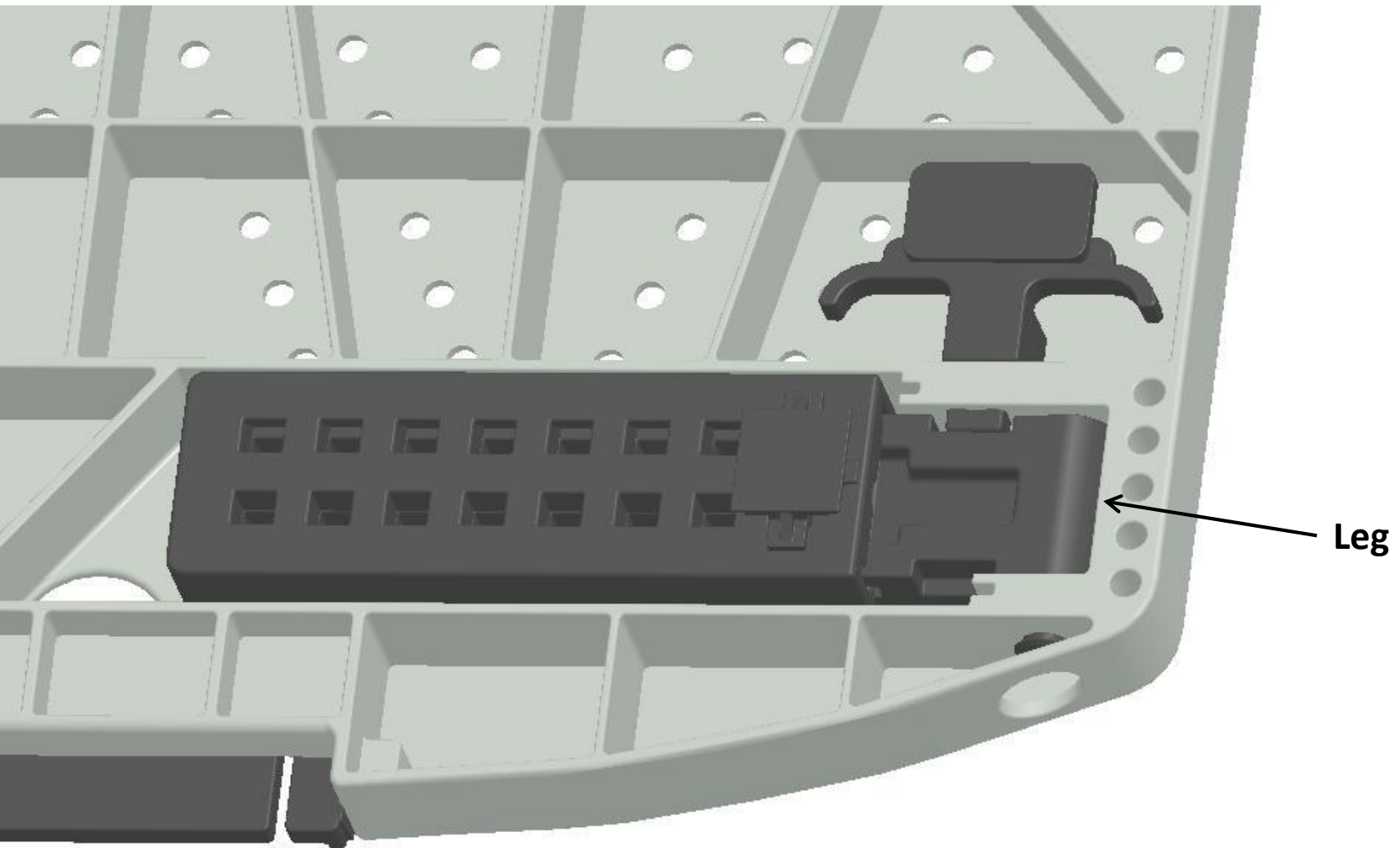


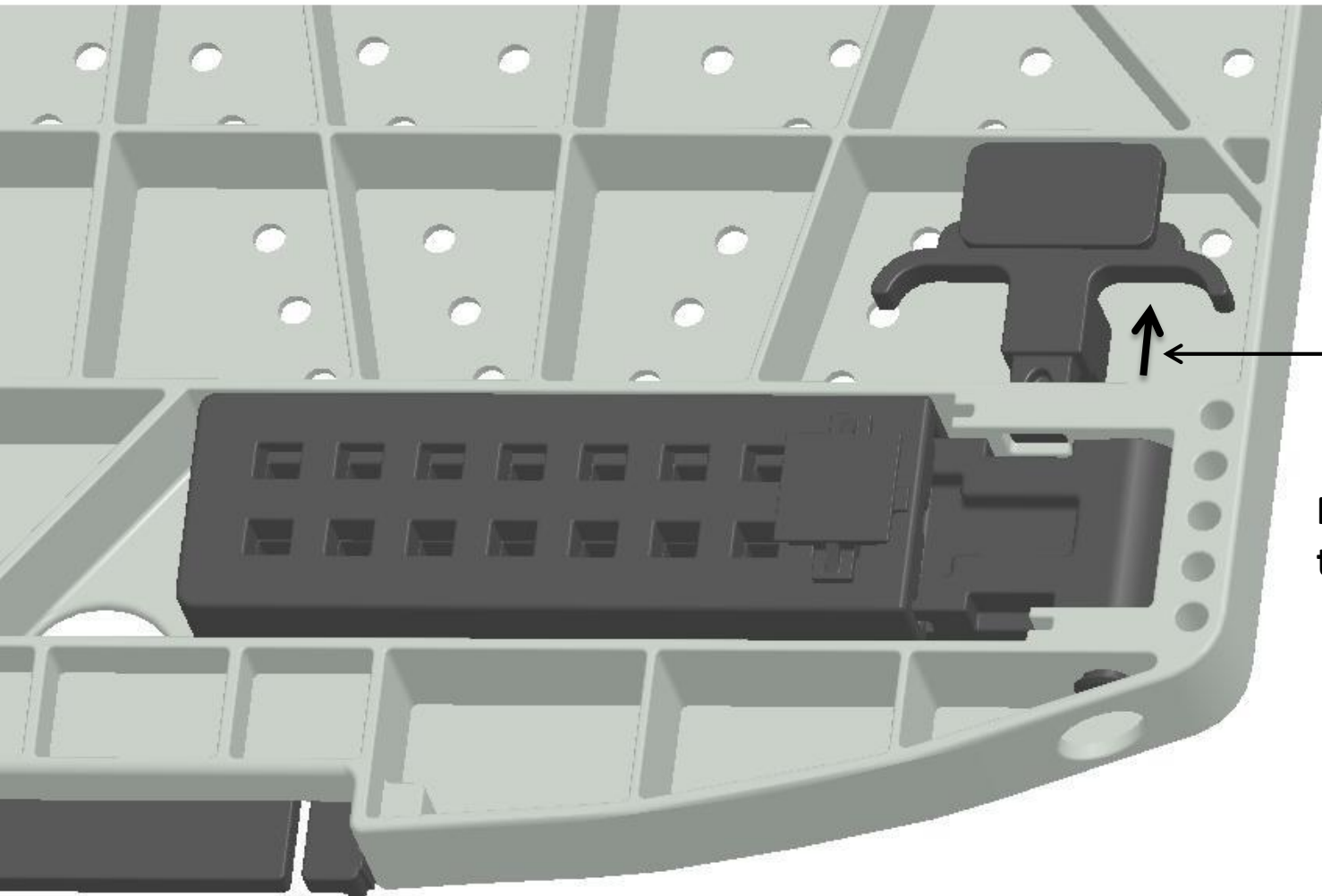
TOP VIEW



BOTTOM VIEW

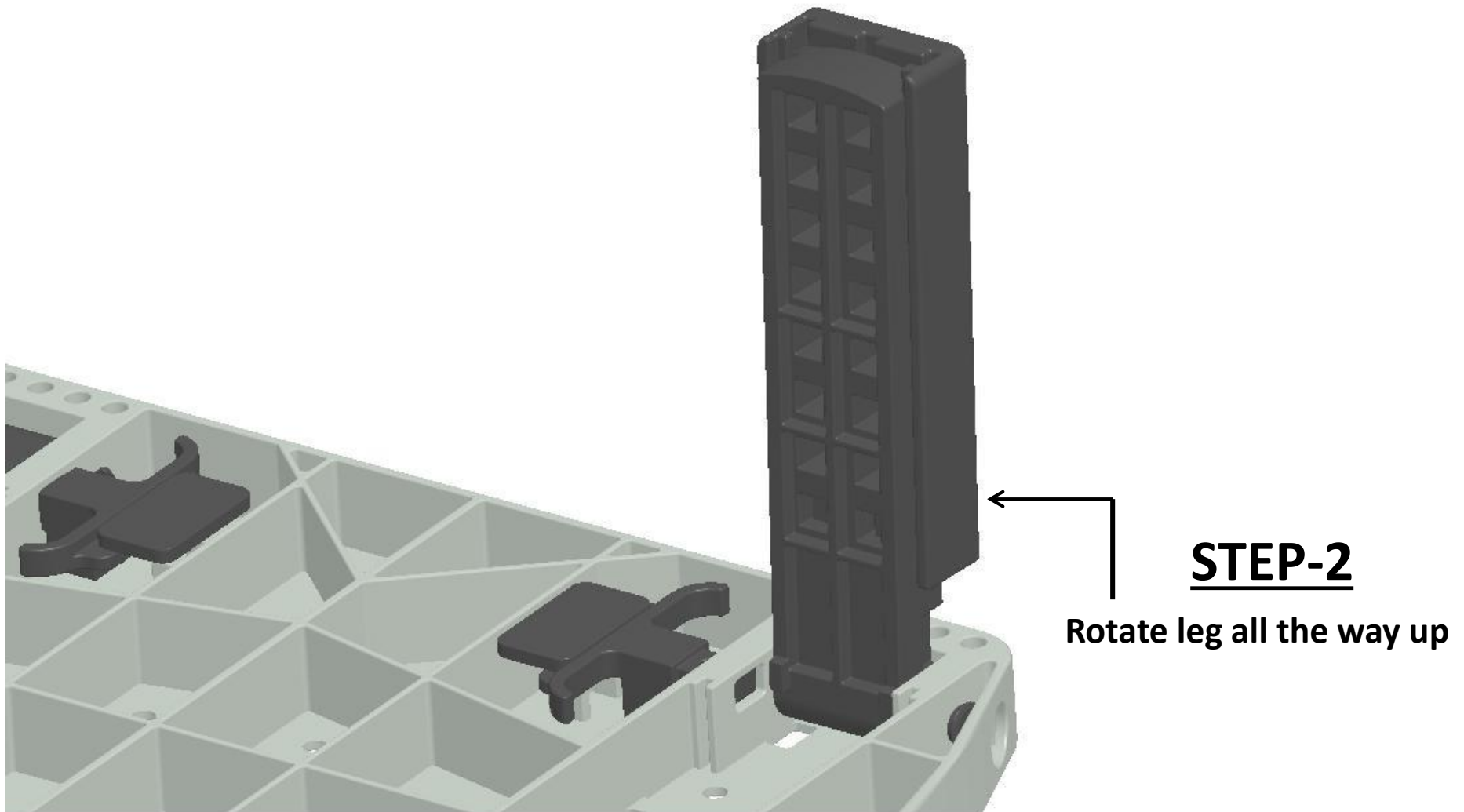


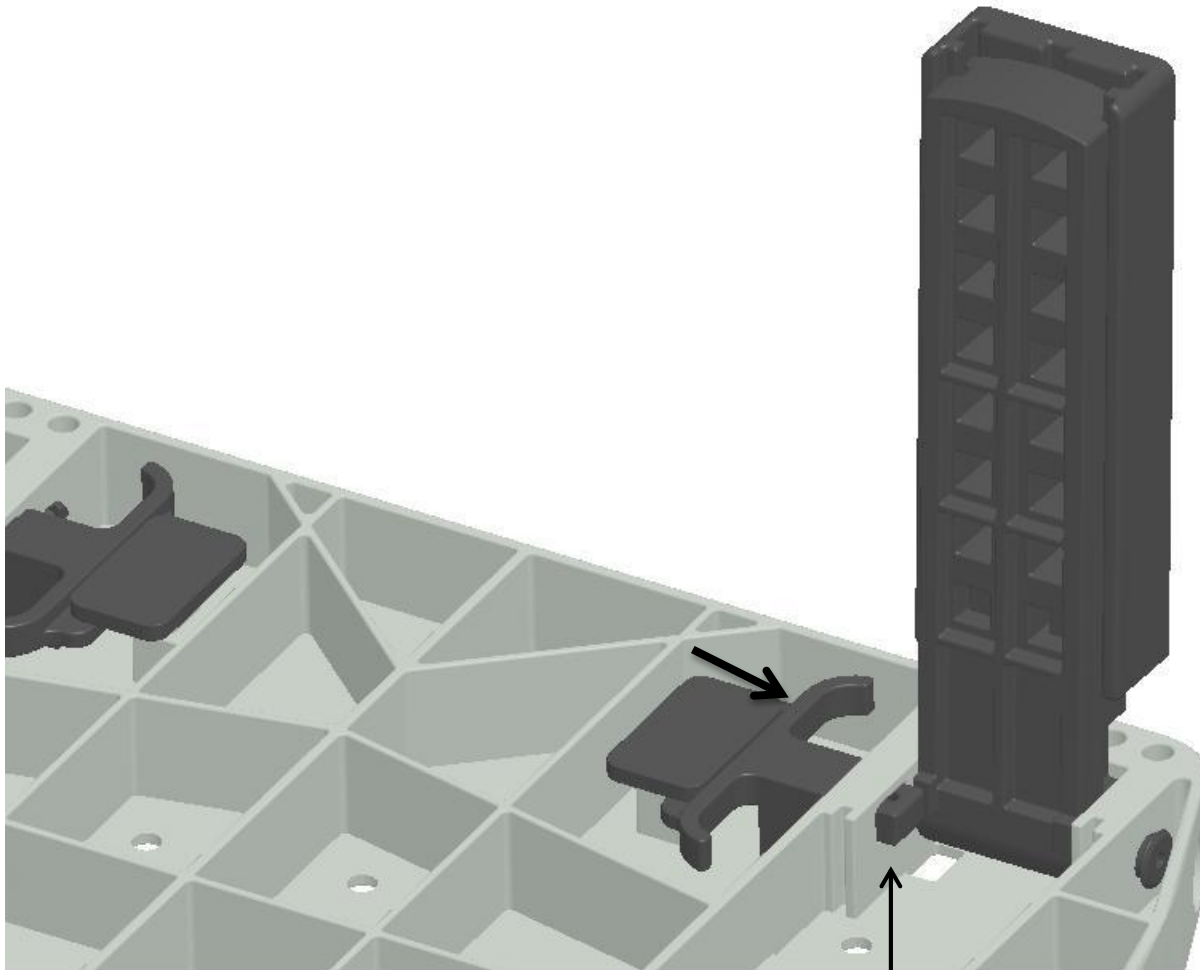




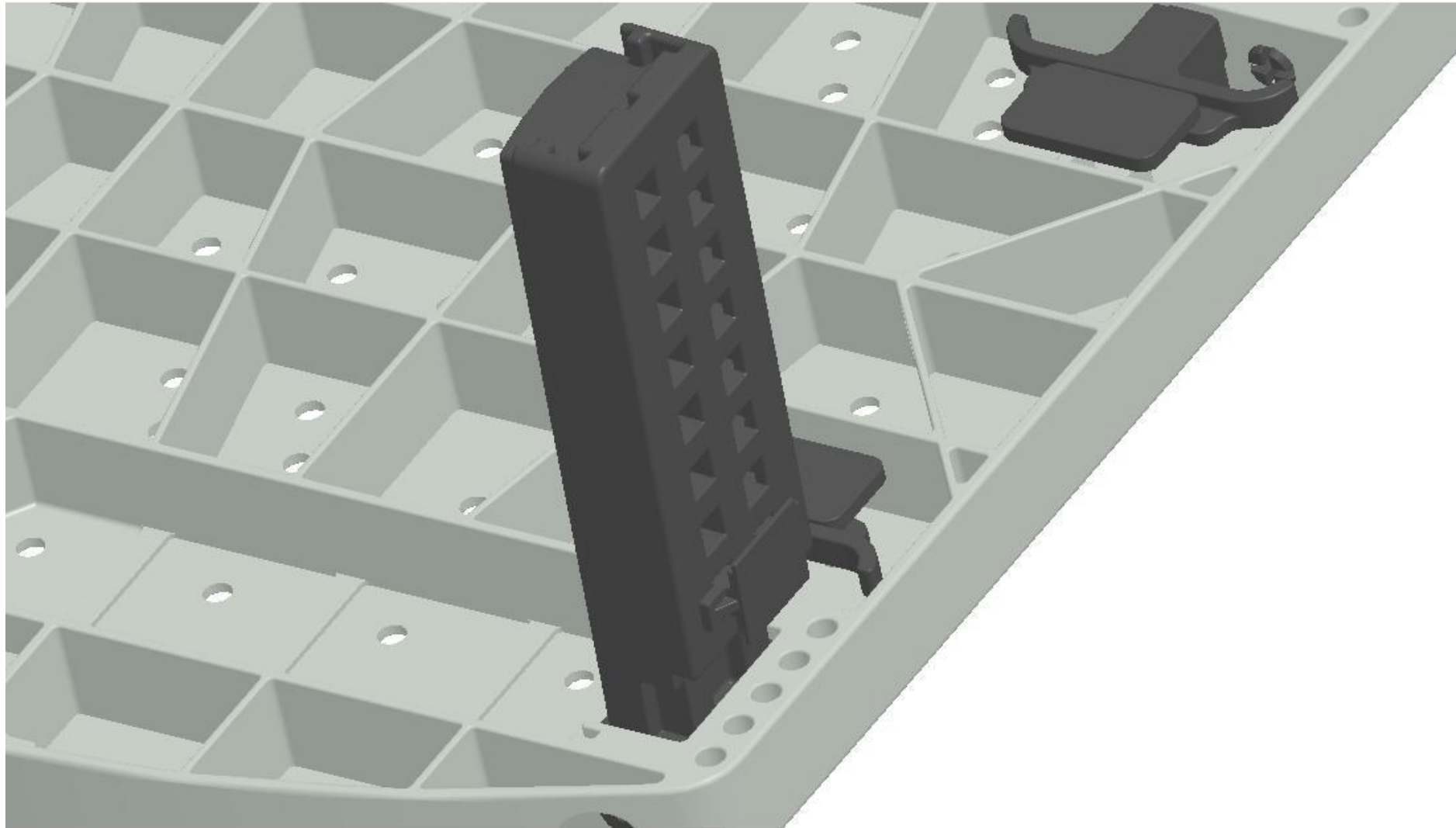
STEP-1

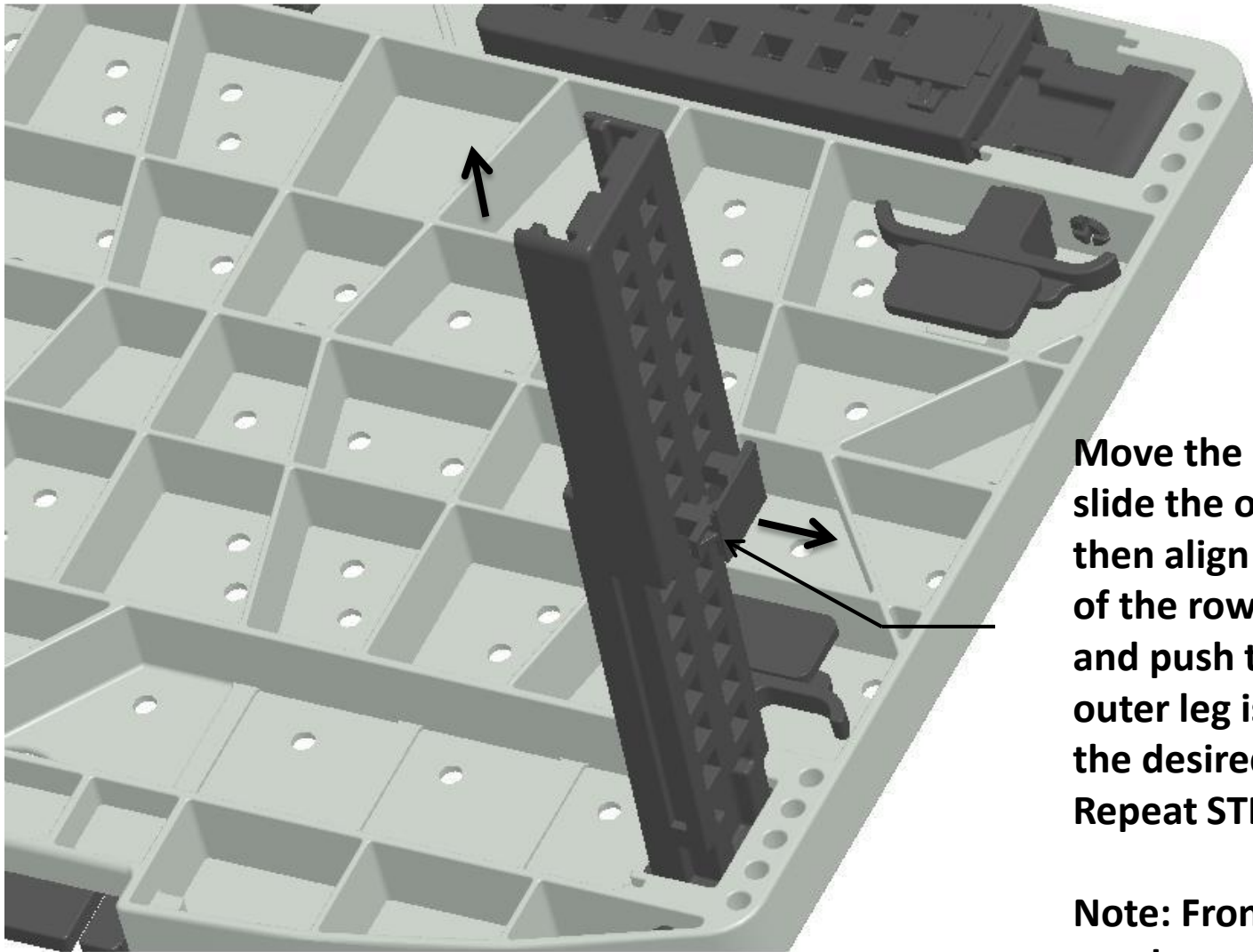
Move key outward ,
to release leg





STEP-3 Release key to lock the leg
in vertical position





STEP-4

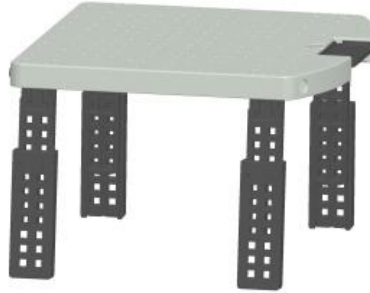
Move the key outward and slide the outer leg upward then align the key to any one of the rows of rectangular holes and push the key inward until the outer leg is locked , in order to get the desired height . Repeat STEP-4 for each leg.

Note: Front legs can be adjusted to a lower height than the back legs to get an angular view.

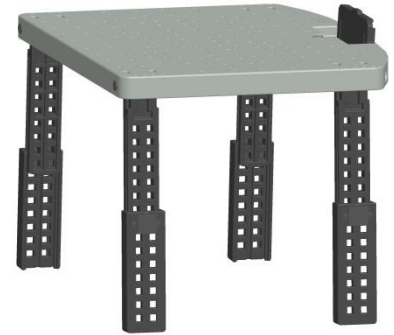
Repeat STEPS 1 to 4 to get different orientations as shown below.



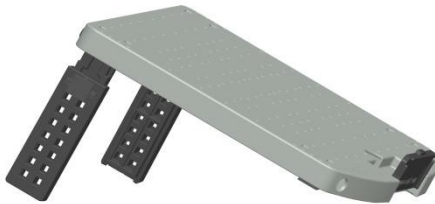
ALL FOUR LEGS OPEN-
MINIMUM HEIGHT-FLAT



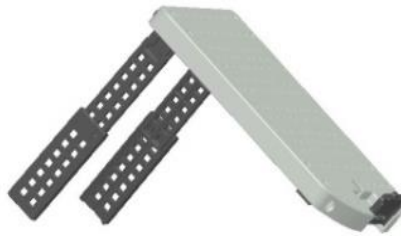
ALL FOUR LEGS OPEN &
EXTENDED HALF WAY-
MEDIUM HEIGHT-FLAT



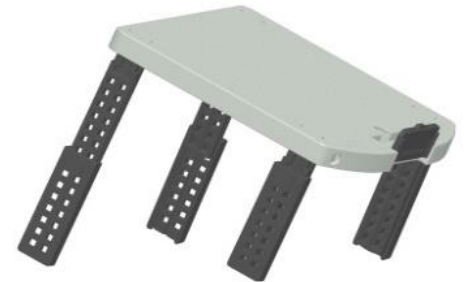
ALL FOUR LEGS OPEN &
EXTENDED ALL THE WAY-
MAXIMUM HEIGHT-FLAT



BACK LEGS OPEN-
MINIMUM HEIGHT &
ANGLE

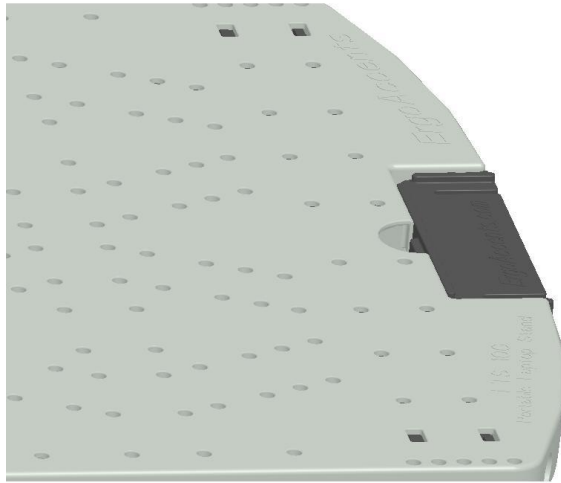


BACK LEGS OPEN &
EXTENDED ALL THE WAY-
MAXIMUM HEIGHT &
MAXIMUM ANGLE



ALL FOUR LEGS OPEN & BACK
LEGS EXTENDED ALL THE WAY-
MAXIMUM HEIGHT & MEDIUM
ANGLE

NOTE: ADDITIONAL COMBINATIONS OF HEIGHT & ANGLE ARE POSSIBLE.



This stopper can be lifted up to keep the laptop from sliding off.

